

CANON

HOW TO USE LINES OR PATTERNS IN YOUR PHOTOGRAPHY

Want to create photos that are visually-stunning? Or simply wish your photos had more impact? Consider using lines and patterns, elements that you see everywhere in the natural world, but sometimes overlook. Discover how using lines and patterns in your photoshoots can help you create dramatic and eye-catching images.

WHAT IS IT?

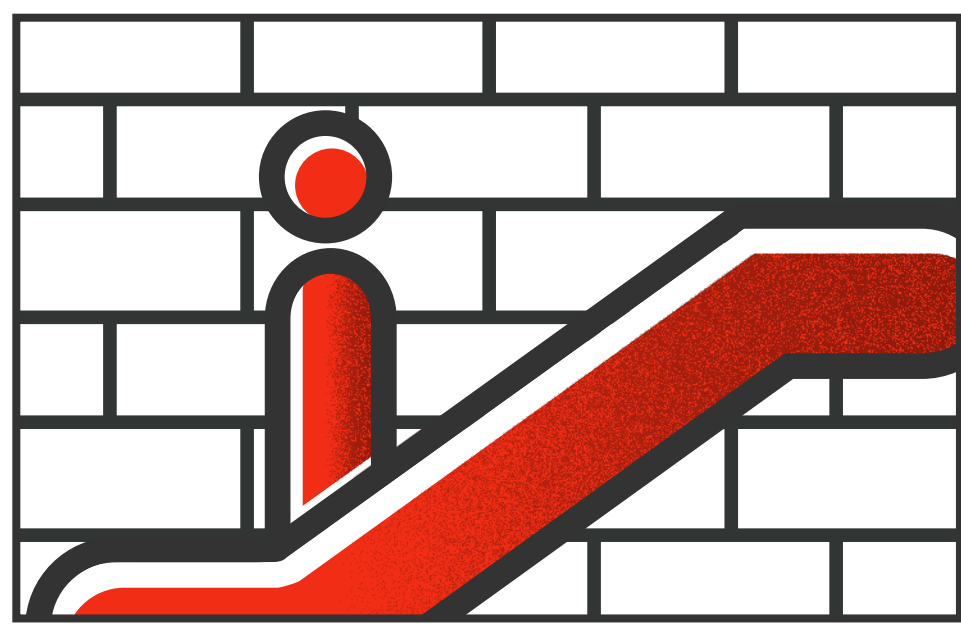


One of the fundamental elements of any photography, lines dictate movement and bring about balance to your images. Sometimes referred to as leading lines, they help to create a flow that leads the viewer's eye towards your subject.

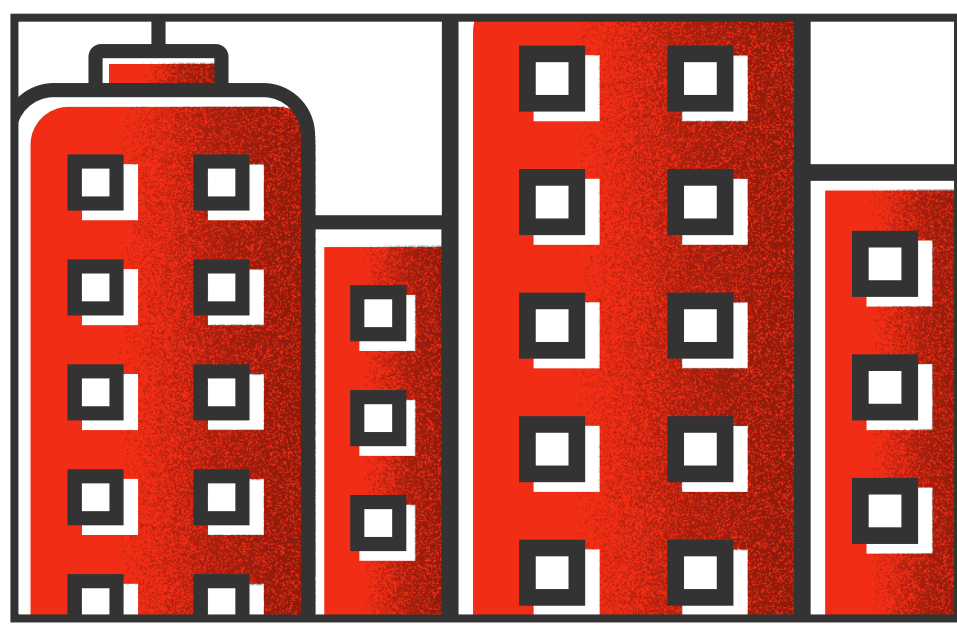


Look out for colours, shapes or forms that repeat themselves and you'll see patterns appearing, such as clusters of shrubbery or a mountainous backdrop. Without a single point of interest, patterns let the viewer's eye dance from point to point and can increase the emotional impact of your photos.

WHY YOU SHOULD USE IT IN YOUR PHOTOGRAPHY

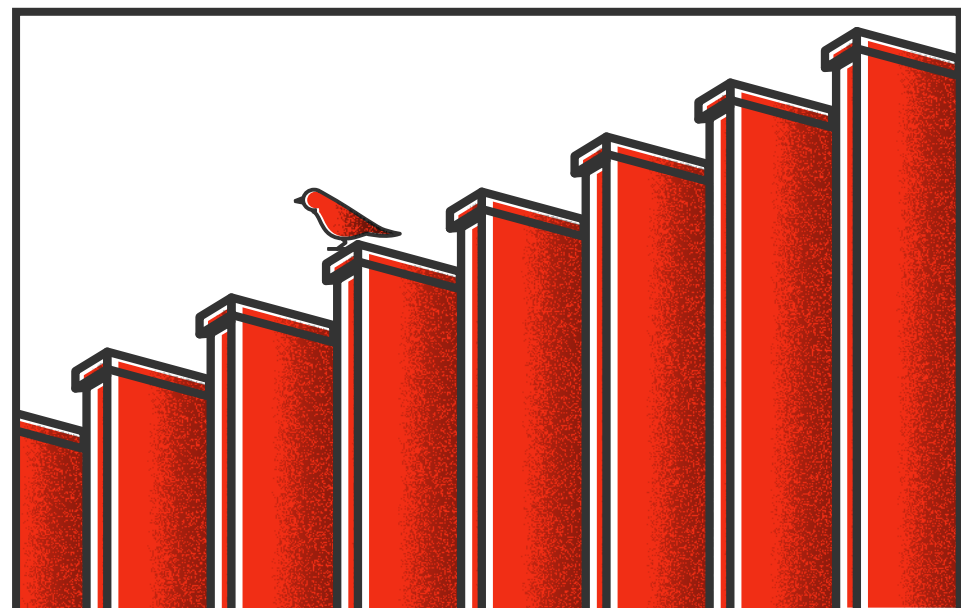


Lines help create significant impact by drawing the viewer's attention and prevent eyes from wandering. Lines can also emphasise distance or illustrate a relationship between the foreground and background.



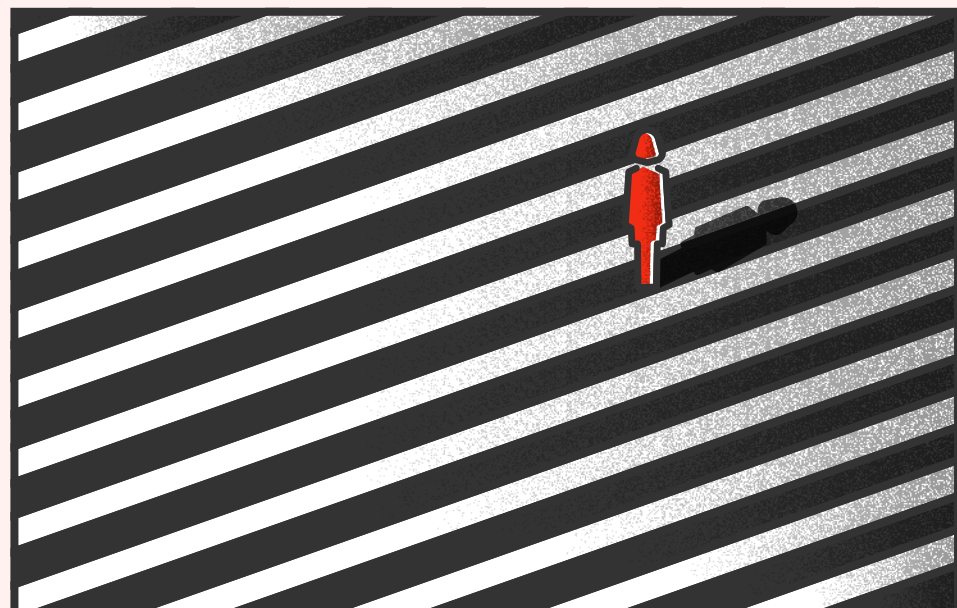
HOW TO COMPOSE YOUR SHOTS

USING VERTICAL LINES



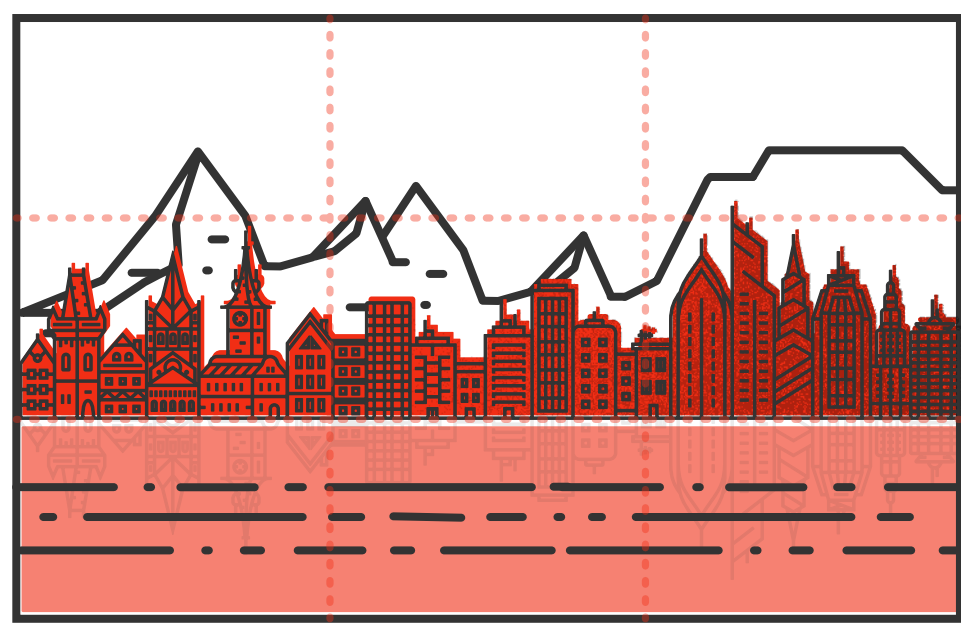
Look out for lines that run up and down as they help to create feelings of height, strength, stability and grandeur. In this image, while the upright beams create tension in the image, having a bird perched on one of them adds a point of interest.

USING CLEAR-CUT LINES



Create a strong, dramatic photo by filling your frame with clear-cut lines or consistent geometric shapes. This image is particularly eye-catching as the lone figure adds a focal point for the viewer's eye to focus on.

USING HORIZONTAL LINES



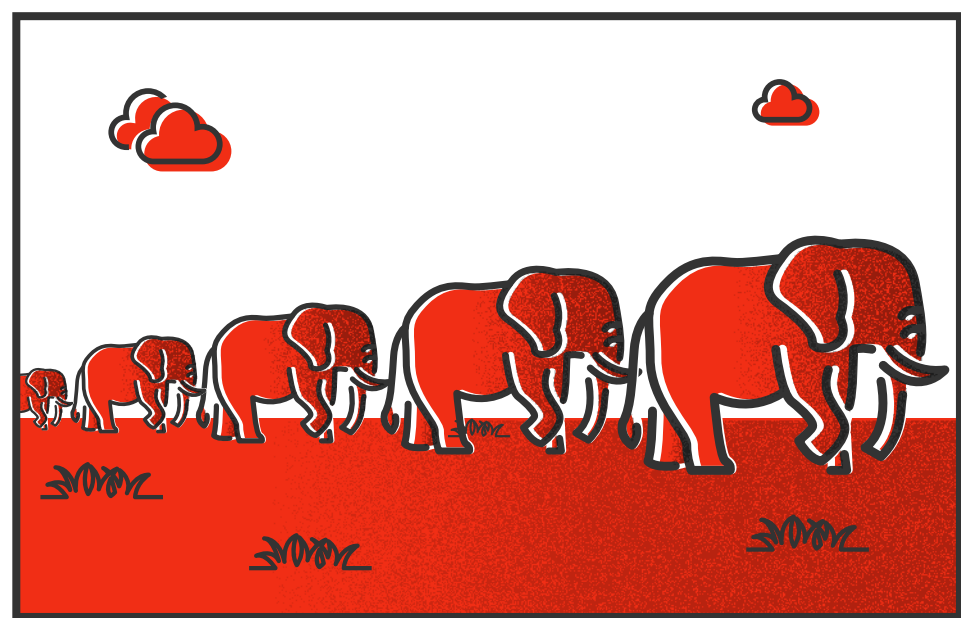
They help to add a sense of calm and tranquility to your photos. In this image, notice how the cityscape and ocean are perfectly aligned with the Rule of Thirds, the mountain behind implies another line, while the layers of horizontal lines give it a stronger composition.

USING IRREGULAR PATTERNS



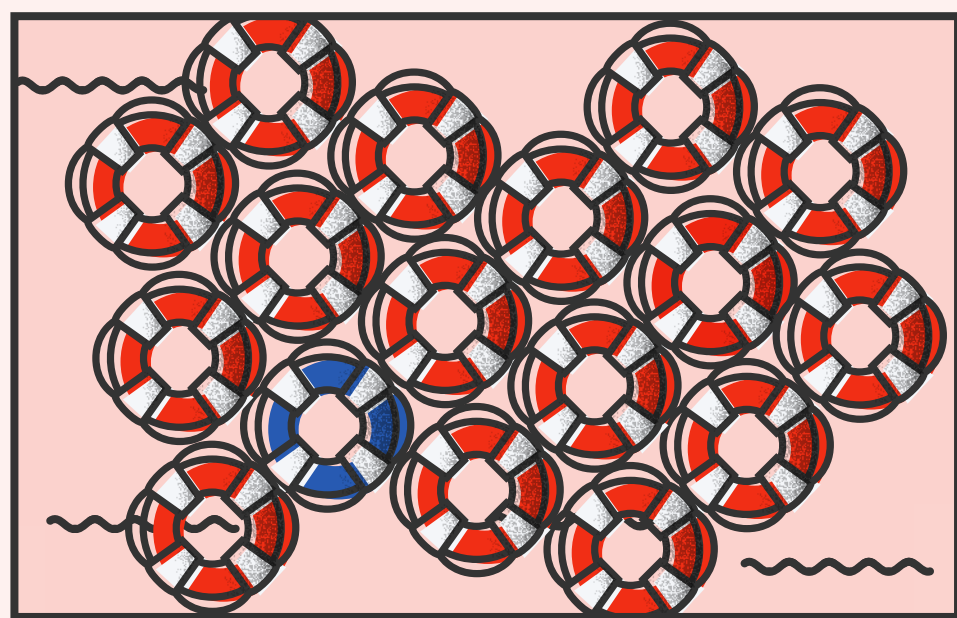
Found often in nature, irregular formations can create patterns that help make your photo more striking, such as patterns on leaves.

USING IMPLIED LINES



They also act as a composition technique to lead the viewer's eye to follow an imaginary line created by your subject's gaze, or in this example, the row of elephants in the scene.

BREAKING THE PATTERN



Add a contrasting color or remove a repeating object to pivot your photo from boring to fascinating. Use the Rule of Thirds as a guide, or consider your focal point as the spot where you place the break in the pattern.